



# Newport Infant School and Nursery

## Low Level Concern Policy

Date of Policy Creation	September 2022
Policy Lead	Governing Body
Date of Policy Adoption by Governing Body	November 2022
Frequency of review	Annually
Review Due	September 2023
Policy Category	Safeguarding

## Contents

1. Introduction
2. Summary
3. Keeping Children Safe in Education September 2022
4. Clarity around Allegation vs Low-Level Concern vs Appropriate Conduct
5. Storing and use of Low-Level Concerns and follow-up information
6. Process to follow when a Low-Level Concern is raised
7. Low Level Concern Form

### 1. Introduction

At Newport Infant School and Nursery, we take safeguarding very seriously. This includes ensuring that adults who work with children do so in a way that is in accordance with the ethos and policies set out by the school, including the Staff Code of Conduct. This policy sets out the detail and processes for staff regarding low-level concerns they may have.

### 2. Summary

It may be possible that a member of staff acts in a way that does not present a risk to children but is, however, inappropriate. A member of staff who has a concern about another member of staff should inform the Head Teacher about their concern using a Low-Level Record of Concern Form. If the Head Teacher or Deputy Head Teacher cannot be contacted, the Chair of Governors should be contacted instead.

### 3. Keeping Children Safe in Education September 2022

The following is taken from Keeping Children Safe in Education September 2022.

*As part of their whole school or college approach to safeguarding, schools and colleges should ensure that they promote an open and transparent culture in which all concerns about all adults working in or on behalf of the school or college (including supply teachers, volunteers and contractors) are dealt with promptly and appropriately. Creating a culture in which all concerns about adults are shared responsibly and with the right person, recorded and dealt with appropriately, is critical. If implemented correctly, this should:*

- *enable schools and colleges to identify inappropriate, problematic or concerning behaviour early*
- *minimise the risk of abuse, and*

- ensure that adults working in or on behalf of the school or college are clear about professional boundaries and act within these boundaries, and in accordance with the ethos and values of the institution.

*What is a low-level concern?*

*The term 'low-level' concern does not mean that it is insignificant. A low-level concern is any concern – no matter how small, and even if no more than causing a sense of unease or a 'nagging doubt' - that an adult working in or on behalf of the school or college may have acted in a way that:*

- is inconsistent with the staff code of conduct, including inappropriate conduct outside of work and
- does not meet the harm threshold or is otherwise not serious enough to consider a referral to the LADO.

*Examples of such behaviour could include, but are not limited to:*

- being over friendly with children
- having favourites
- taking photographs of children on their mobile phone, contrary to school policy
- engaging with a child on a one-to-one basis in a secluded area or behind a closed door, or
- humiliating children.

*Such behaviour can exist on a wide spectrum, from the inadvertent or thoughtless, or behaviour that may look to be inappropriate, but might not be in specific circumstances, through to that which is ultimately intended to enable abuse.*

*Low-level concerns may arise in several ways and from a number of sources. For example: suspicion; complaint; or disclosure made by a child, parent or other adult within or outside of the organisation; or as a result of vetting checks undertaken.*

*It is crucial that all low-level concerns are shared responsibly with the right person and recorded and dealt with appropriately. Ensuring they are dealt with effectively should also protect those working in or on behalf of schools and colleges from becoming the subject of potential false low-level concerns or misunderstandings.*

#### 4. Clarity around Allegation vs Low-Level Concern vs Appropriate Conduct

##### **Allegation**

**Behaviour which indicates that an adult who works with children has:**

- Behaved in a way that has harmed a child or may have harmed a child
- Possibly committed a criminal offence against or related to a child
- Behaved towards a child or children in a way that indicates they may pose a risk of harm to children

### Low Level Concern

Any concern, no matter how small, even if no more than a nagging doubt – that an adult may have acted in a manner which:

- Is not consistent with an organisation's Code of Conduct and/or
- Relates to their conduct outside of work which, even if not linked to a particular act or omission, has caused a sense of unease about that adult's suitability to work with children.

### Appropriate Conduct

Behaviour which is entirely consistent with the organisation's Code of Conduct, and the law.

## 5. Storing and use of Low-Level Concerns and follow-up information

LLC forms and follow-up information will be stored securely within the schools safeguarding systems, with access only by the leadership team. This will be stored in accordance with the school's GDPR and data protection policies.

The staff member(s) reporting the concern must keep the information confidential and not share the concern with others apart from the Head Teacher or those aware in the senior leadership team.

Low-Level Concerns will not be referred to in references unless they have been formalised into more significant concerns resulting in disciplinary or misconduct procedures.

Whenever staff leave Newport Infant School and Nursery, any record of low-level concerns which are stored about them will be reviewed as to whether or not that information needs to be kept.

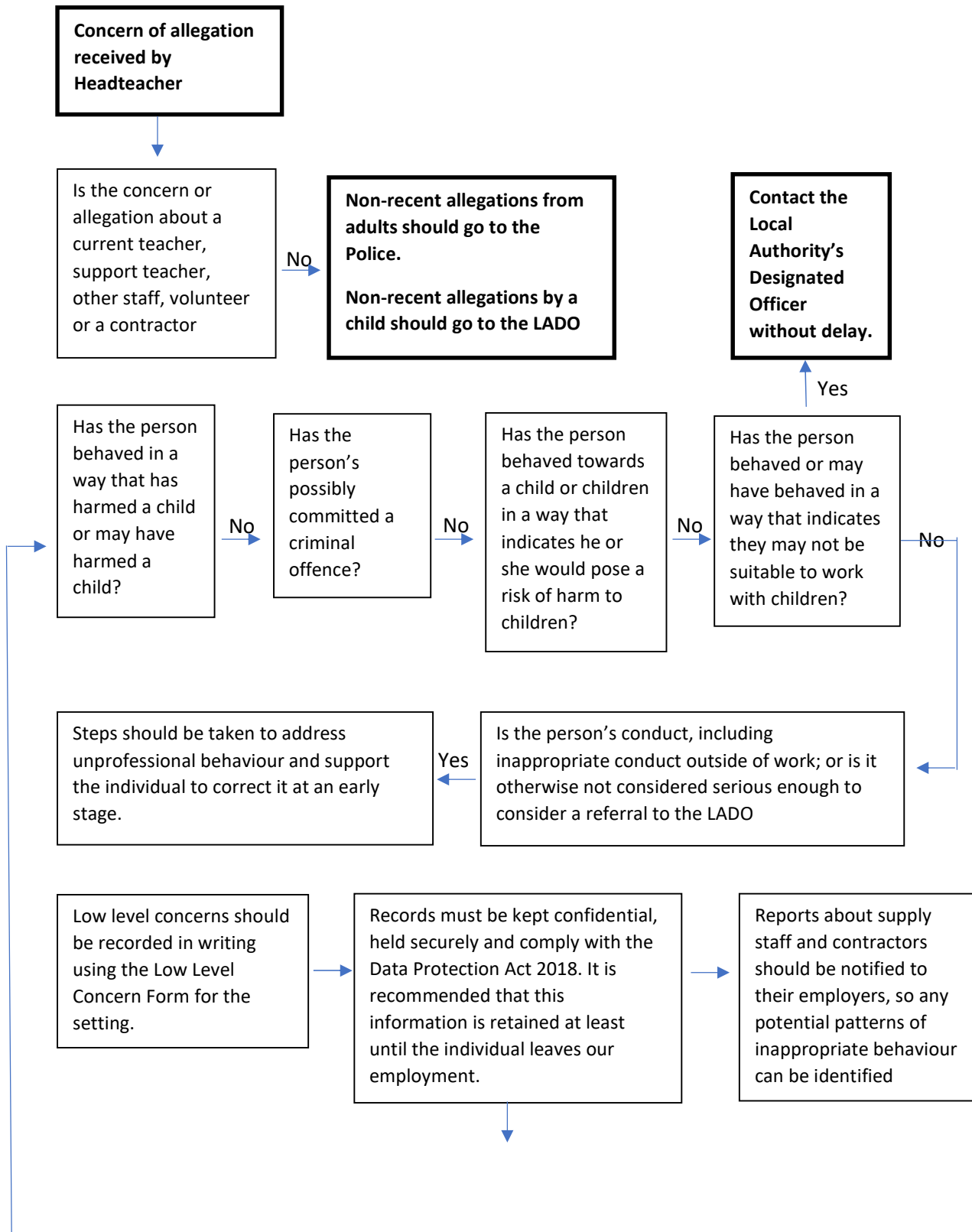
Consideration will be given to:

(a) whether some or all of the information contained within any record may have any reasonably likely value in terms of any potential historic employment or abuse claim so as to justify keeping it, in line with normal safeguarding records practice; or

(b) if, on balance, any record is not considered to have any reasonably likely value, still less actionable concern, and ought to be deleted accordingly.

## 6. Process to follow when a Low-Level Concern is raised .

Further information is available in Keeping Children Safe in Education 2022 Part Four.



Steps should be taken to address unprofessional behaviour and support the individual to correct it at an early stage.

Records should be reviewed so that potential patterns of concerning, problematic or inappropriate behaviour can be identified

The records' review might identify that there are wider cultural issues within the school that enabled the behaviour to occur. This might mean that policies or processes could be revised or extra CPD may be needed.

### Low Level Concern Form

Name of person about whom there is a concern	
Date	
Role within school	
Reported to	
Name of person making the allegation/raising the concern	
Nature of the concern	
Actions taken - dated	
Member of staff informed of outcome include date	
Outcome	

If escalation is the outcome this will be supported by the LA and the LADO	
Signed	